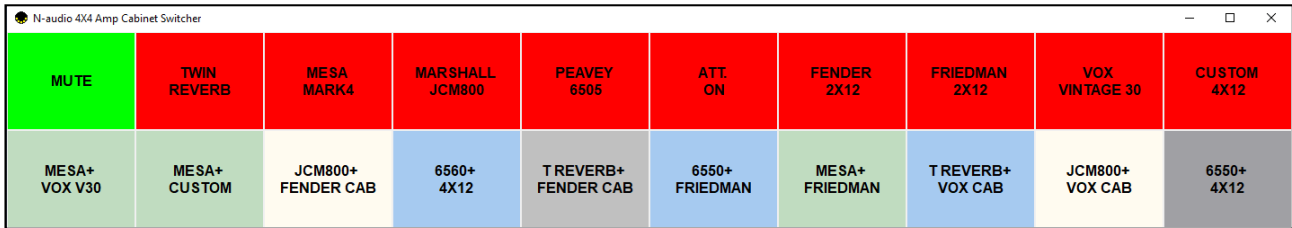


N-audio Amp Cabinet Switcher Control for Windows

This program is designed for Microsoft Windows operating system and serves to emulate the buttons on the N-audio 8X7 and 4X4 Amplifier Cabinet Switchers.



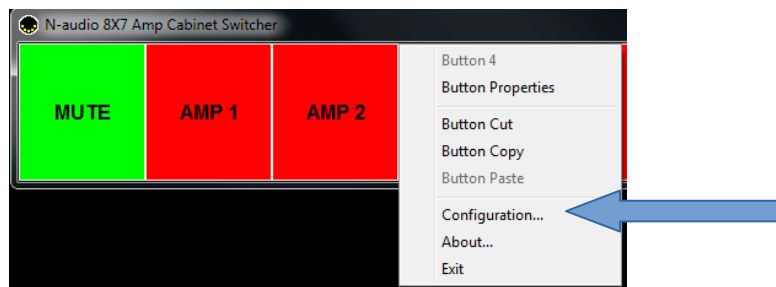
Please visit the N-audio website: <https://www.n-audio.net/>

Navigate to the 8X7 or 4X4 product, and download the corresponding archive file. Unzip it onto your hard drive. Inside the directory, you will find two files: an executable EXE file and an INI file. It is important not to delete the INI file keeping it in the same directory and name with the program. All that remains is to run either the 4X4Switcher or the 8X7Switcher program. No installation is required.

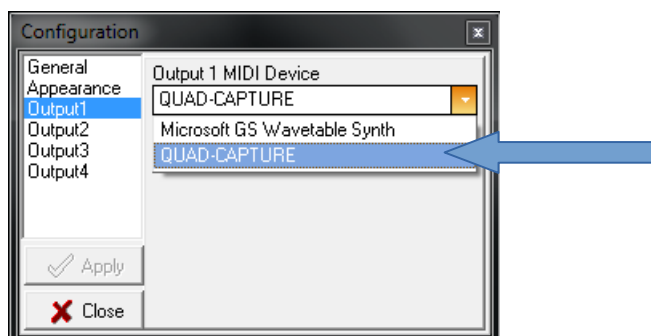
To make use of this functionality, you will need to connect a MIDI cable between the MIDI OUT port of your sound card and the MIDI IN port of your N-audio Switcher. By default, this program is set to operate on MIDI Channel 1. If you have changed the default MIDI Channel of your Amp Cabinet Switcher to a different one, it is recommended to switch it back to MIDI Channel 1 to ensure proper functionality during the initial use.

First Use:

Open the program and simply right-click on any button using your mouse. A menu will appear. Select **Configuration...**



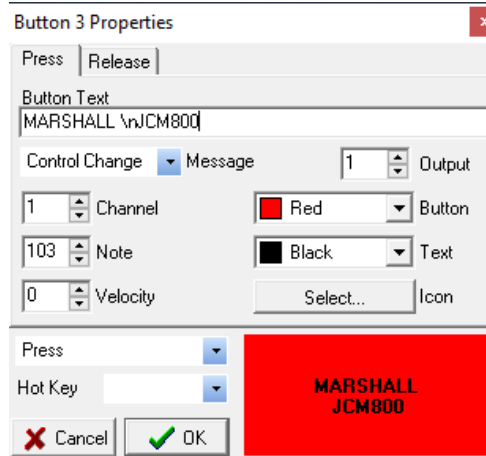
From **Output1** select your sound card, to which you have connected the MIDI cable and press Apply. At this point, all buttons should be synchronized with the corresponding buttons on your Switcher.



From **Appearance** you can modify the global text size and color.

Customize the program buttons:

Right-click on any button and choose **Button Properties** from the menu that appears. This will open a new window where you can personalize the text and color of each button. For instance, you can enter the models of your amplifier and cabinets to provide specific labels and color for each button. In the lower right corner, you will see what your button will look like. You can use **/Hot Key/** if you want a keyboard shortcut for the specific button.



NOTE: If you want to add text on two or more lines, just use **\n** command.
For example: MARSHALL \nJCM800

From Button Properties menu, you can change the MIDI Channel as well. If you want to use different MIDI Channel, you have to change it for all buttons manually. Do not forget to set the same the MIDI Channel of your Switcher. Keep in mind that your Switcher have fixed midi control changes. They are pre-loaded into this program. Here is a table with the supported control changes for the N-audio 8X7 and 4X4 Amp Cabinet Switcher:

8X7 Switcher	4X4 Switcher	CC#	Value
MUTE	MUTE	102	any
Amp 1	Amp 1	103	any
Amp 2	Amp 2	104	any
Amp 3	N/A	105	any
Amp 4	N/A	106	any
Amp 5	Amp 3	107	any
Amp 6	Amp 4	108	any
Amp 7	N/A	109	any
Amp 8	N/A	110	any
Attenuator ON	Attenuator ON	111	any
Attenuator OFF	Attenuator OFF	112	any
Cabinet 1	N/A	113	any
Cabinet 2	N/A	114	any
Cabinet 3	Cabinet 1	115	any
Cabinet 4	Cabinet 2	116	any
Cabinet 5	N/A	117	any
Cabinet 6	Cabinet 3	118	any
Cabinet 7	Cabinet 4	119	any

NOTE: Since the communication between the computer and the switcher is one-way, it is necessary to first choose the cabinet and then the amplifier, similar to how you would normally operate your N-audio Amp Cabinet Switcher.

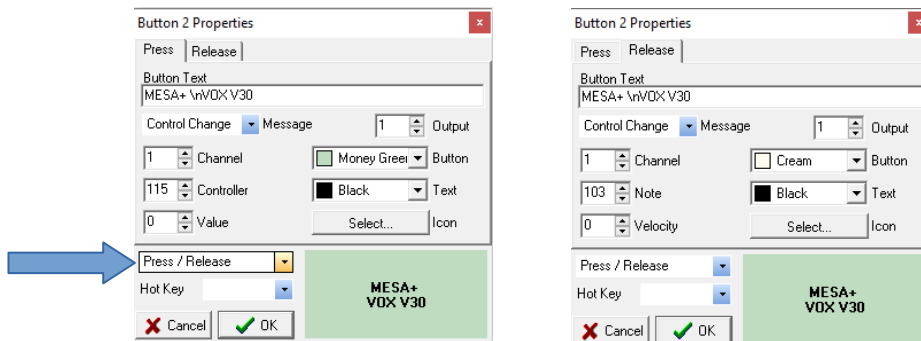
Using the custom preset program buttons with LEARN function:

Each custom preset software button has predefined Program Changes controllers starting from 100. They could be modified with your specific ones if needed. To program each one you have to use the Learn function of your Amp Cabinet Switcher as usual:

- Select the desired cabinets and amplifier from their buttons.
- Press and hold the MUTE/MIDI button until the MIDI LED starts flashing.
- Press the desired custom button from the program. The MIDI LED will stop flashing.
- Done. The preset is stored.

Using the custom preset program buttons with pre-defined Control Changes:

This software can send two MIDI messages when pressing and releasing each button.



To accomplish this, you need to switch back to Control Change messages and choose the right controller message for your cabinet in the Press tab. Use **Press/Release** from the menu as shown. In the Release tab, use the correct Control Change for your amplifier. Now, when you press the button, your cabinet will be selected, and releasing it will enable the amplifier.

Take a moment to explore all the capabilities in this software. For instance, you have the ability to copy and paste buttons, which can be quite useful. There is also nice feature that allows you to customize the software according to your specific requirements. You can resize the program as well. In the event that something goes wrong, simply download the program again from the N-audio website and begin anew. It is good to point that all modifications are stored in the INI file, and you have the option to manually edit it if needed.

Supported Operating Systems:

This software has been tested on Windows 7 and Windows 10. However, it is expected to work on other Microsoft Windows operating systems as well.

Software licensing:

This program is provided under a free license for commercial use. The N-audio Switcher versions uses modified version of MIDI Buttons.

<https://www.da-share.com/software/midi-buttons/>